

## 1.1A HIGH VOLTAGE ADJUSTABLE CURRENT REGULATOR WITH ENABLE CONTROL

### DESCRIPTION

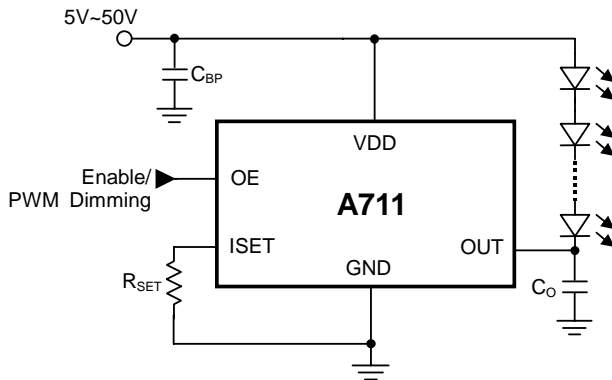
The A711 is a high voltage, low dropout current regulator for high power LED, that the maximum output current can be up to 1.1Amp. The output current was decided by an external resistor. The output sink current could be disabled via OE pin. PWM dimming function could also be controlled by OE pin.

TO-263 package is available for good power dissipation ability. Build-in thermal protection to prevent the chip from over heat damage, and adequate thermal pad PCB area is required to control the junction temperature below 125°C.

### FEATURES

- **0.8V Output Drop-out Voltage at 1.1Amp.**
- **1.1Amp. Maximum Output Current.**
- **Output Current Controlled by External Resistor.**
- **3us Fast Response Output Stage Enable Control.**
- **Output Pin Sustain Voltage Up To 75V.**
- **Supply Voltage Range 5V~50V**
- **TO-263-5L package**

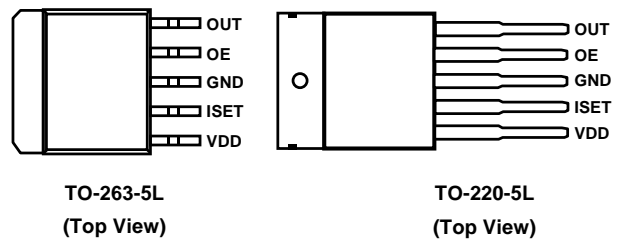
### TYPICAL APPLICATION CIRCUIT



### APPLICATIONS

- High Power LED Driver
- RGB Full Color Power LED driver
- LCD Monitor/TV LED Backlight Driver
- LED Lighting
- LED Street Lamp / Table Lamp

### PACKAGE PIN OUT



### ORDER INFORMATION

V	TO-263-5L	P	TO-220-5L
	5 pin		5 pin
	A711VFT		A711PFT

Note: All surface-mount packages are available in Tape & Reel. Append the letter "T" to part number (i.e. A711VFT). The letter "F" is marked for Lead Free process.

**IMPORTANT NOTICE**

ADDtek reserves the right to make changes to its products or to discontinue any integrated circuit product or service without notice, and advises its customers to obtain the latest version of relevant information to verify, before placing orders, that the information being relied on is current.

A few applications using integrated circuit products may involve potential risks of death, personal injury, or severe property or environmental damage. ADDtek integrated circuit products are not designed, intended, authorized, or warranted to be suitable for use in life-support applications, devices or systems or other critical applications. Use of ADDtek products in such applications is understood to be fully at the risk of the customer. In order to minimize risks associated with the customer's applications, the customer should provide adequate design and operating safeguards.

ADDtek assumes no liability to customer product design or application support. ADDtek warrants the performance of its products to the specifications applicable at the time of sale.

---

**ADDtek Corp.**  
9F, No. 20, Sec. 3, Bade Rd., Taipei, Taiwan, 105  
TEL: 2-25700299  
FAX: 2-25700196

---